

Series 715-WW Double Flanged Butterfly Valve

- High Quality Water Works Valve
- Fusion Bonded Epoxy Coated Ductile Iron Body
- 1,600kPa rating
- 316SS slim-style disc
- One Piece Stainless Steel shaft supported by 4 bronze bushes
- Proven full length wrap around seat
- Face to face dimensions to AS4795/ISO-5752
- Stainless Steel fasteners



Operating Torques in Nm

Size NB	Shut off Pressures in kPa			
	300	600	1,000	1,600
50	13	13	14	15
65	13	13	14	16
80	21	21	23	24
100	35	37	40	45
125	55	58	63	71
150	82	87	98	112
200	149	159	180	210
250	236	249	297	358
300	348	385	445	542
350	517	550	641	760
400	684	746	889	1019
450	895	995	1187	1610
500	1132	1244	1491	1821
600	1678	1834	2180	2790

Torque figures based on water service without safety margin.

Double Flanged Butterfly Valves

Lever & Gear operated

ISO Square Drive for sizes 50-300mm and positive keyed drive for sizes 350mm and above.

Four self lubricating bronze bushes provide maximum stem support with minimum friction. Eliminates potential stem seizure.

Pressure surge seals (O'rings) are moulded inside the seat stem hole area to provide failsafe sealing around stem, eliminating possible leakage.

Internal square drive and precision taper pins ensure positive, vibration proof, stem to disc connection.
Square drive \leq 300mm size
Pins \geq 350mm size

Precision profile disc provides bubble-tight shutoff with minimal disc/seat interference, assuring minimum torque and longer seat life.

Flanged AS4087 Class 16 as standard. Also available in other drilling patterns.

Actuator mounting flange, conforms to ISO-5211 and accommodates all types of operators, lever, gear, electric, hydraulic and pneumatic

O'ring weather seal prevents ingress of moisture and external material into the stem area.

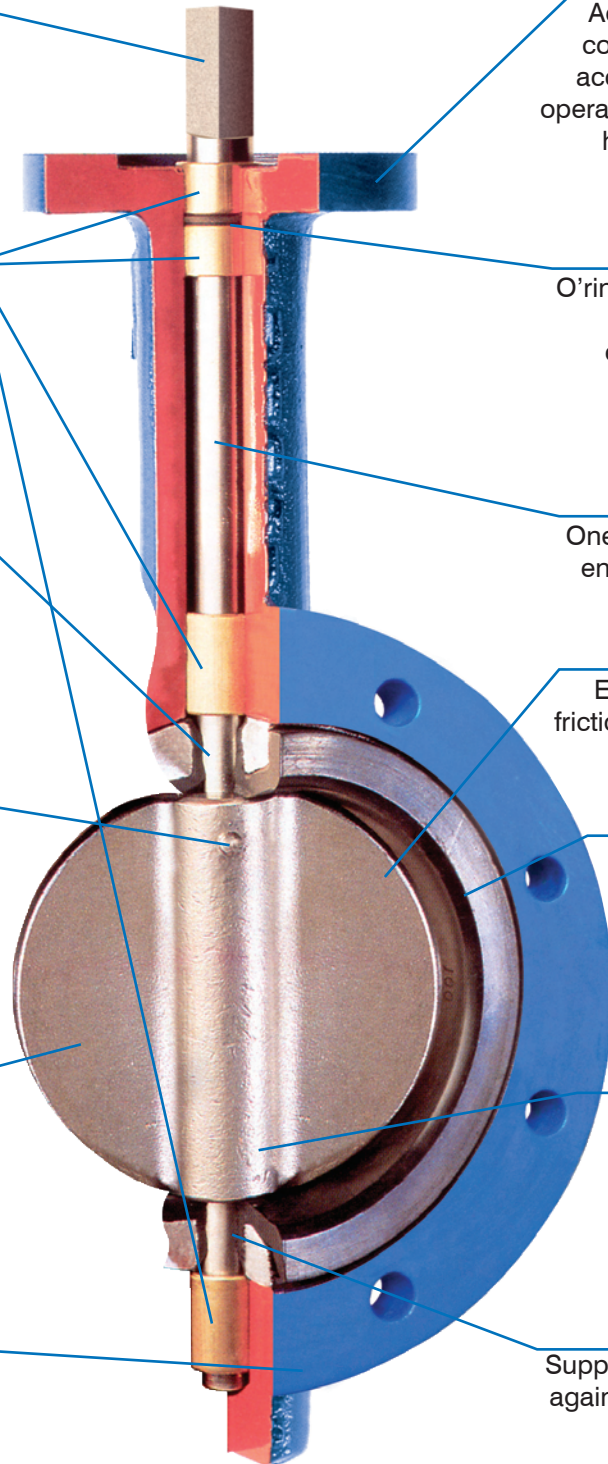
One piece thru-stem design ensures dependability and positive disc control.

Eccentric design reduces friction against seat ensuring long service life.

Full length wrap around seat is non-collapsible, stretch resistant, blowout proof and suitable for vacuum.

Polished disc flats "mate" with seat flats to give a highly efficient seal; prevents leakage into stem area.

Supported stem seal protects against distortion, a common cause of stem leakage.

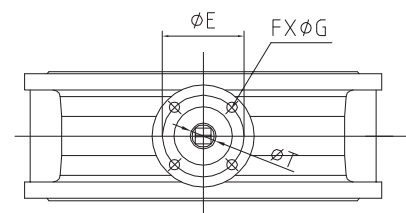
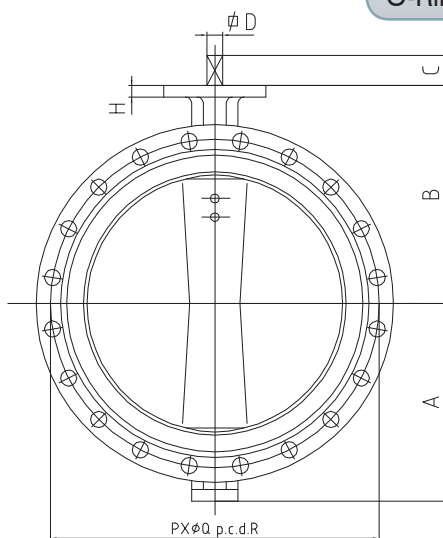
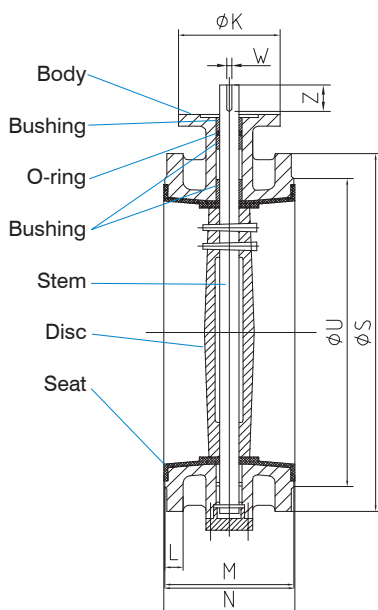


Ductile Iron Double Flanged Butterfly Valves - Rated 16 Bar

50mm (2") - 1200mm (48") Wafer Butterfly Valves
Lever or Gear operated (standard)

Fusion bonded epoxy (FBE) coating
Blue body colour

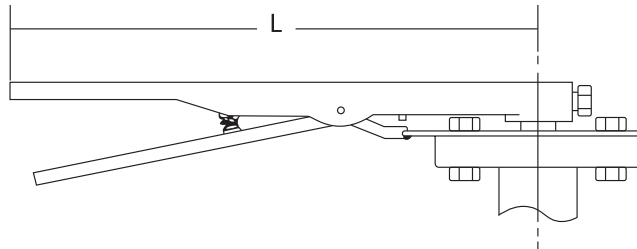
Part Name	Material
Body	Ductile Iron GGG40
Disc	Stainless Steel CF8M
Stem	Stainless Steel 410
Seat	EPDM
O-Ring	Nitrile (NBR)



	A	B	C	H	K	E	F	G	P	Q	R	L	M	N	S	U	D	W	Z	T
DN50	83	120	32	13	90	70	4	10	4	18	114	20	108	111	150	102	11X11	-	-	12.6
DN65	93	130	32	13	90	70	4	10	4	18	127	20	112	115	165	122	11X11	-	-	12.6
DN80	100	145	32	13	90	70	4	10	4	18	146	22	114	115	200	138	11X11	-	-	12.6
DN100	114	155	32	13	90	70	4	10	4	18	178	22	127	130	220	158	11X11	-	-	15.77
DN125	125	170	32	16	90	70	4	10	8	18	210	24	140	143	250	188	14X14	-	-	18.92
DN150	143	190	32	16	90	70	4	10	8	18	235	24	140	143	280	212	14X14	-	-	18.92
DN200	170	205	45	16	125	102	4	12	8	18	292	26	152	155	335	268	17X17	-	-	22.1
DN250	198	235	45	16	125	102	4	12	8	22	356	26	165	168	405	320	22X22	-	-	28.45
DN300	223	280	45	20	140	102	4	12	12	22	406	32	178	182	455	370	22X22	-	-	38.1
DN350	270	310	45	20	140	102	4	12	12	26	470	36	190	194	525	430	22X22	-	-	38.1
DN400	300	340	51	20	197	140	4	18	12	26	521	38	216	221	580	482	-	12	66	37.9
DN450	340	375	51	20	197	140	4	18	12	26	584	40	222	227	640	532	-	12	66	42.86
DN500	355	430	57	24	197	140	4	18	16	26	641	42	229	234	705	585	-	12	70	45.72
DN600	410	500	70	24	276	165	4	23	16	30	756	48	267	272	825	685	-	16	74	53.98
DN700	478	560	66	28	300	254	8	20	20	30	845	54	292	299	910	800	-	18	66	63.35
DN800	529	620	66	28	300	254	8	18	20	36	984	58	318	325	1060	905	-	18	66	63.35
DN900	584	665	118	34	300	254	8	18	24	36	1092	62	330	337	1175	1005	-	20	118	75
DN1000	657	735	141	36	300	254	8	18	24	36	1175	66	410	417	1255	1110	-	25	141	85
DN1200	799	917	141	36	300	254	8	18	32	36	1410	66	470	478	1490	1328	-	25	141	85

Butterfly Valves Operators

Lever Operator



Actuator Options

Lever

Cast Iron Epoxy Coated Lever with 10 positions SS notch plate, SS fasteners & spring.

Gear Operated

Cast Iron Epoxy Coated Gearbox with SS fasteners. Standard on all sizes

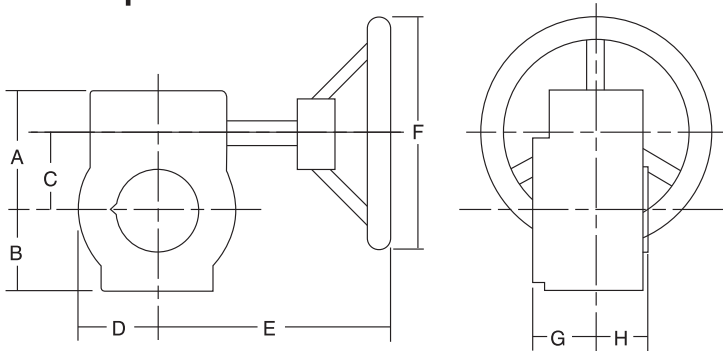
Pneumatic

Air operated (double acting & spring return), c/w solenoid valves, limit switches, position indicators, modulating controls

Electric

Open/close, modulating control

Gear Operator



Size mm	Model	Gear Operator						Lever		
		A	B	C	D	E	F	G	H	L
50	G01	74	52	45	52	153	150	39	36	267
65	G01	74	52	45	52	153	150	39	36	267
80	G01	74	52	45	52	153	150	39	36	267
100	G02	74	52	45	52	153	150	39	36	267
125	G03	74	52	45	52	153	150	39	36	267
150	G03	74	52	45	52	153	150	39	36	267
200	G04	101	75	63	75	250	300	43	43	353
250	G05	101	75	63	75	250	300	43	43	353
300	G06	118	81	80	81	250	300	38	45	353
350	G06	118	81	80	81	250	300	38	45	-
400+	Refer									

Note

The designs, materials, dimensions and specifications shown are subject to change without notice due to our continuing program of product development.



NSW

Wyong - Head Office

10 Hereford Street, Berkeley Vale NSW 2261
PO Box 5010 Chittaway NSW 2261
Tel: +61 (0)2 4389 6191
Fax: +61 (0)2 4389 6198
Email: info@hmagroup.com.au

Sydney

13 Sirius Road Lane Cove, NSW 2066
Tel: +61 (0)2 9428 7300
Fax: +61 (0)2 9428 7399
Email: sydney@hmagroup.com.au

QLD

Brisbane

4th Floor, 49 Sherwood Road, Toowong QLD 4066
PO Box 106, Toowong QLD 4066
Tel: +61 (0)7 3859 6800
Fax: +61 (0)7 3859 6869
Email: brisbane@hmagroup.com.au

Mackay

22-30 Southgate Drive,
Southgate Industrial Park, Paget QLD 4740
PO Box 6221, Mackay Mail Centre QLD 4741
Tel: +61 (0)7 4998 6900
Fax: +61 (0)7 4998 6999
Email: mackay@hmagroup.com.au

Gladstone

9 Neil Street, Gladstone QLD 4680
PO Box 1731, Gladstone QLD 4680
Tel: +61 (0)7 4978 3128
Fax: +61 (0)7 4978 3127
Email: gladstone@hmagroup.com.au

Townsville

PO Box 347, Aitkenvale QLD 4814
Tel: +61 (0)7 4728 6300
Fax: +61 (0)7 4728 6388
Mobile: +61 (0)417 996 694
Email: townsville@hmagroup.com.au

WA

Perth

119 Dowd Street, Welshpool WA 6106
Tel: +61 (0)8 6254 9500
Fax: +61 (0)8 6254 9599
Email: perth@hmagroup.com.au

VIC

Melbourne

PO Box 204, Narre Warren VIC 3805
Mobile: +61 (0)429 176 688
Email: melbourne@hmagroup.com.au

Morwell

8 Jones Road, Morwell Vic 3840
PO Box 647, Morwell Vic 3840
Tel: +61 (0)3 5136 8400
Fax: +61 (0)3 5136 8499
Email: morwell@hmagroup.com.au

SA

Adelaide

PO Box 1280, North Haven SA 5018
Tel: +61 (0)8 8341 8067
Fax: +61 (0)8 8341 8067
Mobile: +61 (0)437 460 032
Email: adelaide@hmagroup.com.au

NEW ZEALAND

Hamilton - NZ Head Office

Unit 14, 9 Karewa Place, Pukete, Hamilton NZ 3200
PO Box 10102, Te Rapa, Hamilton NZ 3241
Tel: +64 (0)7 847 1880
Fax: +64 (0)7 847 1883
Email: hamilton@hmagroup.co.nz

Wellington

Mobile: +64 (0)272 612 744
Fax: +64 (0)7 847 1883
Email: wellington@hmagroup.co.nz

Dunedin

Mobile: +64 (0)275 116 694
Fax: +64 (0)7 847 1883
Email: dunedin@hmagroup.co.nz

Halley & Mellowes Australasia Group of Companies