

Features:

- 100% unrestricted flow area for improved flow characteristics and lower head loss
- One piece precision molded steel disc reinforced with nylon and backed by a 25 year warranty
- Memory-flex disc is the only moving part for long life and minimal maintenance
- Full sized top access port allows disc removal without removing valve from line
- Integral O-ring on disc assures positive seating at high and low pressures
- "Short Disc Stroke" combined with memory flex disc action reduces potentially destructive water hammer
- Backflow capabilities are available by means of an optional screw type backflow actuator
- Every Swing-Flex® Check Valve is 100% tested including a seat test to assure drop tight sealing and hydrostatic testing to assure the integrity of the casting

Technical Data

- Sizes: DN50-1200 (2" - 48")
- Max. Working Pressure: 1600kPa
- Ductile Iron Body
- Fusion Bonded Epoxy Coated
- Buna-N Encapsulated Disc
- Flanges Drilled AS4087 Class 16
- 316 Stainless Steel Fasteners and Plugs
- Lay Length To AS3578 & AS4794
- Available with WA Watercorp approval SPS223

Options

Disc Accelerator (SURGEBUSTER)

The Disc Accelerator is a precision formed stainless steel mechanism that closes the valve disc rapidly thus avoiding slamming by flow reversal and yet allowing the disc to be stabilised under flow conditions. The accelerator is fully enclosed within the valve and completely out of the flow path



Disc Position Indicator

The cover mounted disc position indicator provides clear indication of the valve's disc position. A proximity limit switch can also be provided to indicate open/closed position to remote location.



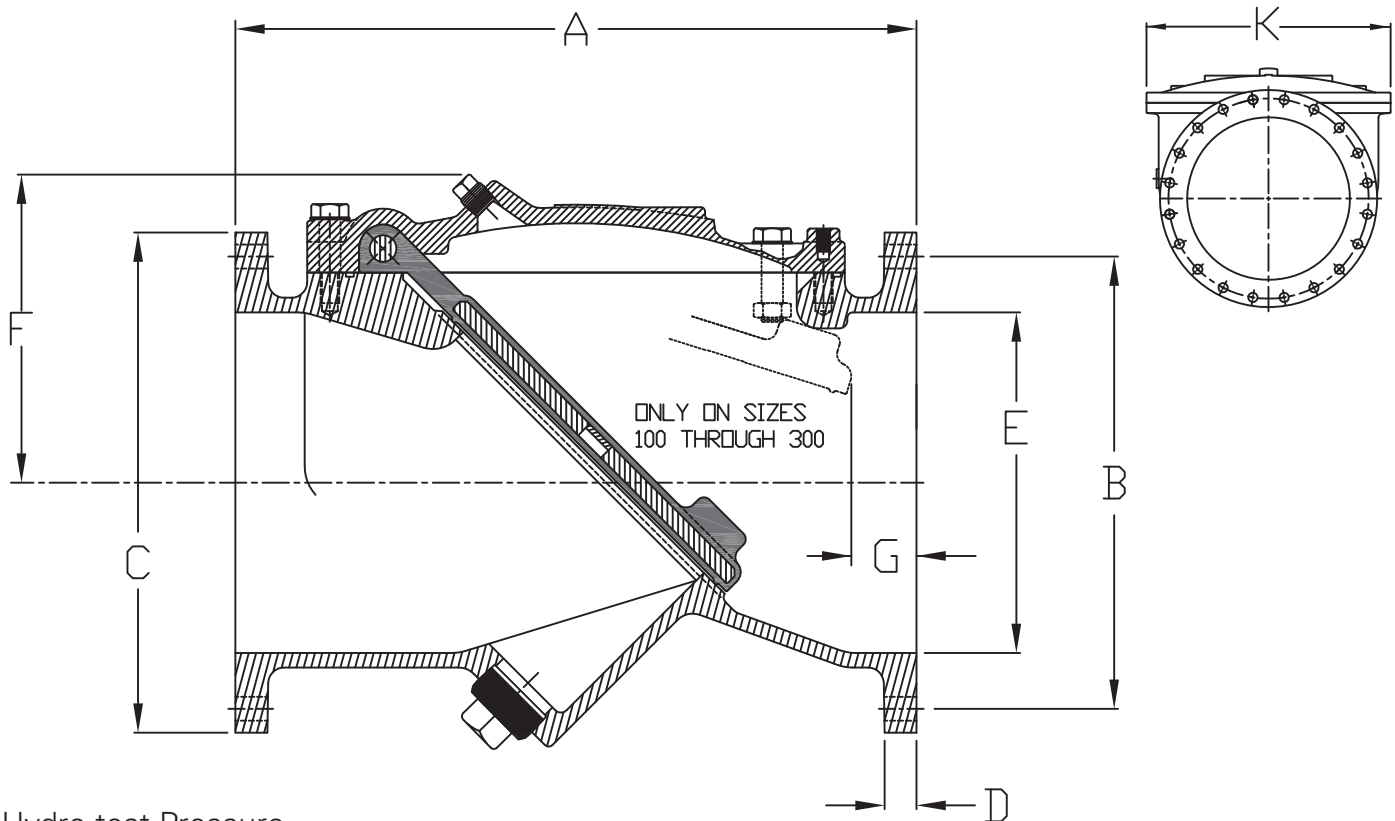
Backflow Actuator

Available for use when manual backflow operation is required. Most commonly used for priming pumps, back flushing, draining lines, and system testing.



Rubber Lining

Unlike conventional swing check valves, the Swing Flex Check Valves is designed to accept synthetic or natural rubber lining. Body lining coupled with synthetic Memory-Flex discs makes the Swingflex ideally suited for systems containing abrasive or corrosive fluids.



Hydro test Pressure

1.5 Times Cold Working Pressure - CWP

Drawing depicts 375mm size to scale

AS4087 Class 16, Millimeters

Valve Size	Model No.	CWP BAR	A	B	C	D	E	F	G	K	Bolt Size	No. of Bolts	WT-Kg
50*	502A	16	203	114	152	16	50	86	41	132	M16	4	11
80	503AU	16	260	146	185	19	76	130	41	190	M16	4	20
100	504AU	16	330	178	215	19	102	146	54	210	M16	4	32
150	506AU	16	410	235	280	21	152	173	54	284	M16	8	57
200	508AU	16	540	292	335	22	203	213	73	406	M16	8	109
225*	510X005	16	622	324	405	30	254	273	80	533	M16	8	190
250	510AU	16	640	356	405	24	254	273	80	533	M20	8	190
300	512AU	16	700	406	455	30	305	317	88	610	M20	12	290
375	515AU	16	820	495	550	30	375	330	92	591	M24	12	330
450	518AU	16	970	584	640	32	457	388	80	718	M24	12	546
500	520AU	16	1070	641	705	35	508	429	89	778	M24	16	771
600	524AU	16	1220	756	813	48	610	489	127	914	M27	16	998

***NOTES:**

Flange holes are slotted for ANSI 150 and AS4087 Class 16 on 50mm valve

Flange holes are drilled and tapped to AS4087 Class 16 on 225mm valve.

50mm and 225mm sizes are not to Aust Std. lay length.

The designs, materials, dimensions and specifications shown are subject to change without notice due to our continuing program of product development.

Head Office 10 Hereford Street, Berkeley Vale NSW 2261

Tel: +61 (0)2 4389 6191 Email: info@hmagroup.com.au

NSW – Wyong, Sydney **VIC** – South Melbourne, Morwell **SA** – Adelaide **WA** – Perth
QLD – Brisbane, Mackay, Gladstone, Townsville **New Zealand** – Hamilton, Wellington, Dunedin

www.hmagroup.com.au

Committed People Innovative Solutions

Halley & Mellowes Australasia Group of Companies