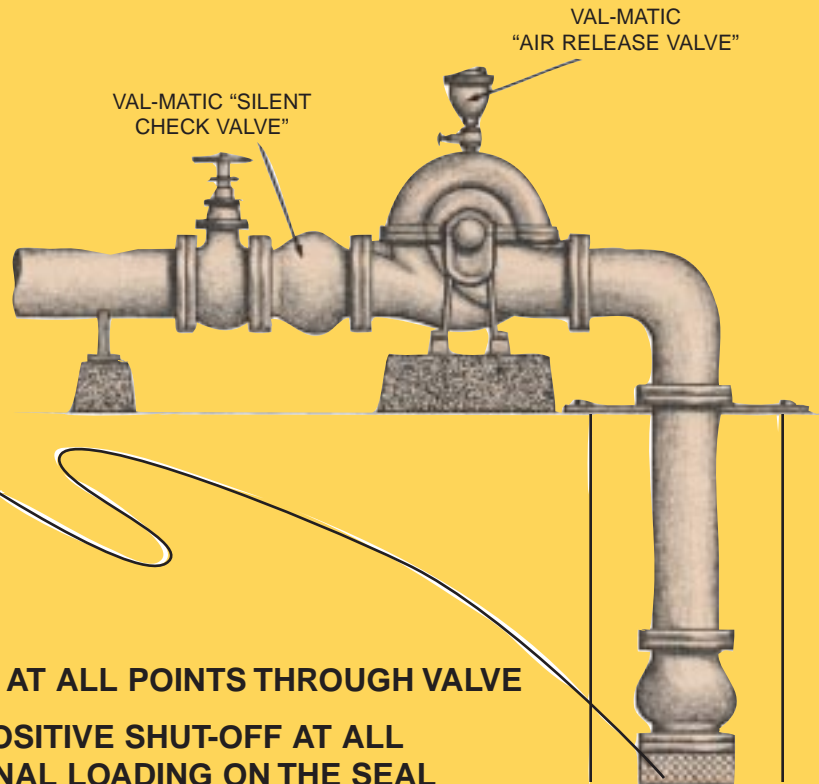
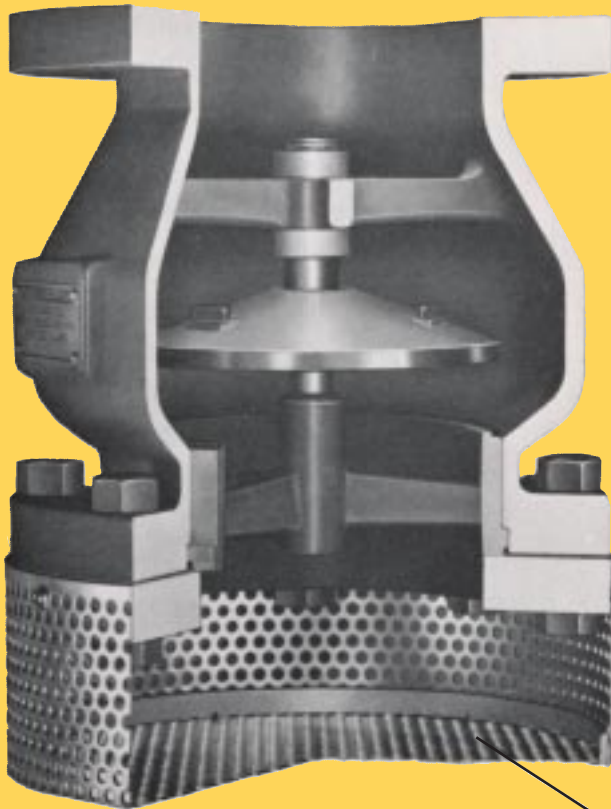


VAL-MATIC®

"SURE SEAL FOOT VALVES"

For POSITIVE
PRIME With
SILENT OPERATION



Special Features

- FULL FLOW AREA, EQUAL TO PIPE SIZE AT ALL POINTS THROUGH VALVE
- UNIQUE SEATING DESIGN, PROVIDES POSITIVE SHUT-OFF AT ALL PRESSURE RANGES WITHOUT ADDITIONAL LOADING ON THE SEAL
- HEAVY DUTY STAINLESS STEEL SCREENING, WITH FLOW AREA 3 TO 4 TIMES THAT OF PIPE AREA
- SILENT OPERATION, BY DESIGN OF DISC, STROKE AND LINEAR CLOSING CHARACTERISTICS

VAL-MATIC®

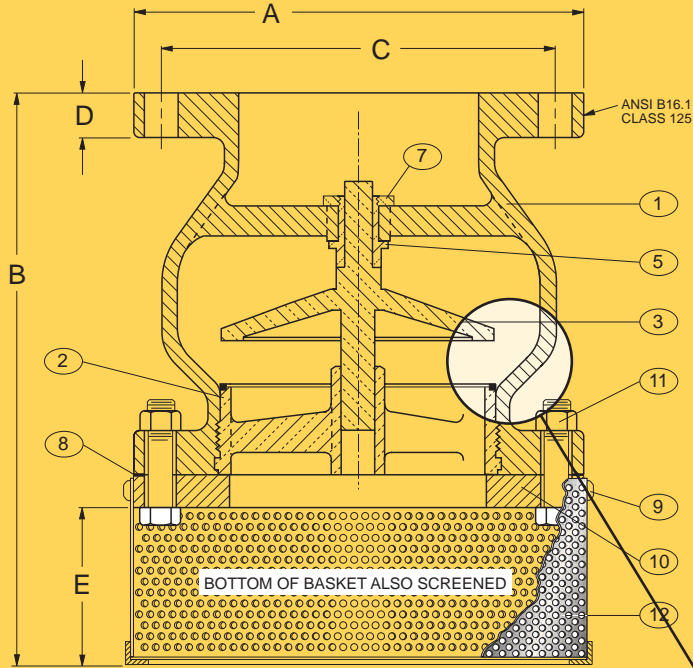
VAL-MATIC® VALVE AND MANUFACTURING CORP.

905 RIVERSIDE DRIVE ■ ELMHURST, IL 60126
PHONE (630)941-7600 ■ FAX (630)941-8042

Design of the “Sure Seal Foot Valve” evolved through a need for a valve that could provide positive sealing action at various pressure ranges without seal damage along with silent operation.

The Val-Matic “Sure Seal Foot Valve” satisfies these requirements plus low head loss thru its full ported area and heavy duty stainless steel basket screening.

The unique seating design provides initial contact with the valve disc and the Buna-N ring, providing a drop-tight seal. As the pressure increases, the Buna-N ring is compressed slightly and the disc makes contact with the metal portion of the valve seat, preventing any further compression of the Buna-N ring. The Buna-N ring will continue to provide the “drop-tight seating” during the higher pressure ranges without damage from the increased pressure loading.



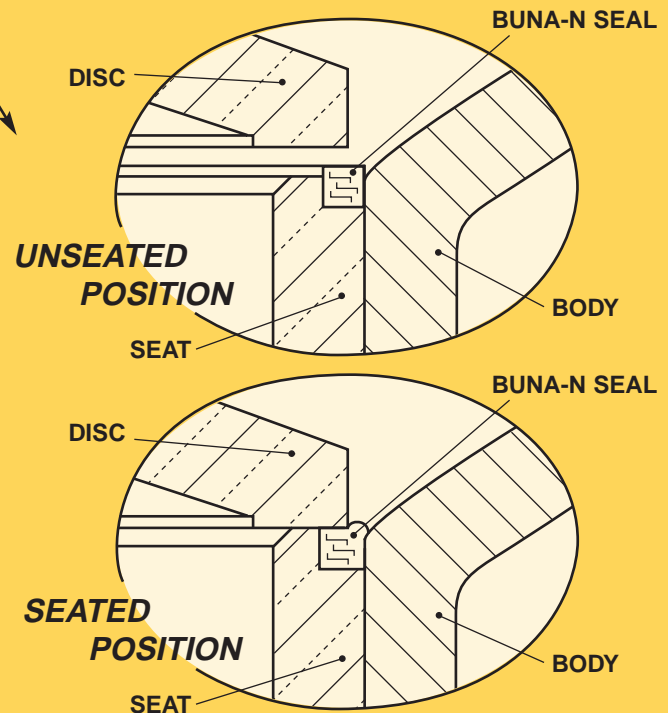
PART NO.	NAME	MATERIAL
1	Body	Cast Iron
2	Seat	Bronze/Buna-N
3	Disc	Bronze
5	Bushing	Bronze
6	Seat Retainer	Stainless Steel
7	Bushing Retainer	Bronze
8	Gasket	Non-Asbestos
9	Screen Retainer	Stainless Steel
10	Flange	Cast Iron
11	Bolts	Steel
12	Screen	Stainless Steel

NOTE: OTHER MATERIALS AVAILABLE UPON REQUEST

FLANGED ANSI CLASS 125 OR CLASS 250

DIMENSIONAL DATA				
SIZE	MODEL	A	B	C
2	1902	9	3	6
2-1/2	1902-1/2	9	3	7
3	1903	9-1/2	3	7-1/2
4	1904	11	3	9
5	1905	13-1/4	4	10
6	1906	15-3/4	5	11
8	1908	19-1/2	6	13-1/2
10	1910	23-1/2	7	16
12	1912	23-1/4	8	19
14	1914	25-3/4	9	21
16	1916	28-7/8	10	23-1/2

SIZES AVAILABLE TO 42"



VAL-MATIC VALVE AND MANUFACTURING CORP.
 905 RIVERSIDE DRIVE • ELMHURST, IL 60126
 630/941-7600 • FAX: 630/941-8042

DISTRIBUTED BY