

V-2IN Type - Size:1/4"-4"



ANSI Class 150 - Stainless Steel

AISI-316 (EN10213-4 1.4408) (ASTM-A351-CF8M)

AISI-304 (EN10213-4 1.4308) (ASTM-A351-CF8)

Carbon Steel

S-20C (EN10213-2 1.0619) (ASTM-A216-WCB)

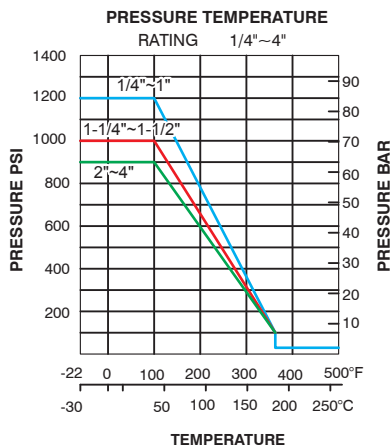
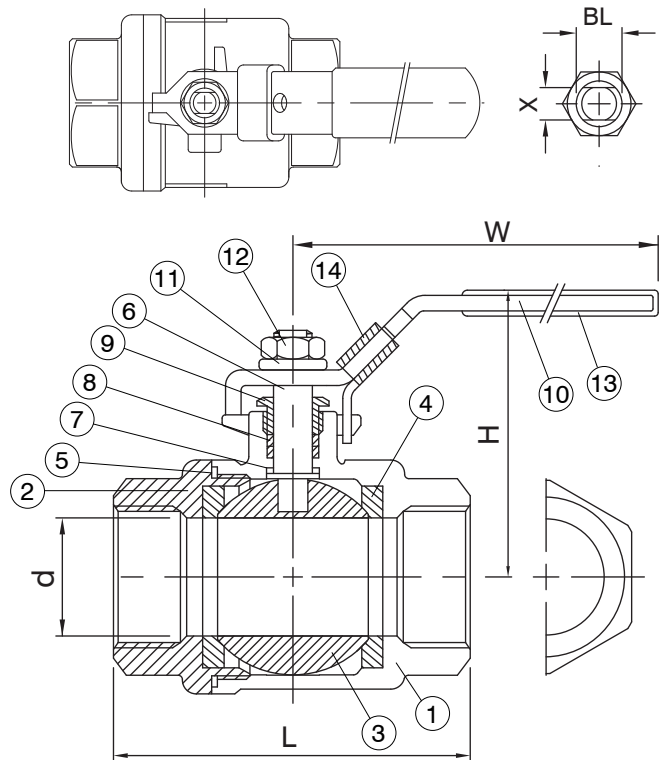
Features:

- Pipe Thread in accordance with ANSI B2.1. BS21 1973, DIN 259/2999, ISO 228
- Lug Body
- Blow-out proof stem/Full port
- Investment casting body and cap
- 1000PSI (69Bar) W.O.G.

Option:

Locking Device

No	Name of Parts	Material
1	Body	ASTM CF8M A351
2	CAP	ASTM CF8M A351
3	Ball	ASTM CF8M A351
4	Ball Seat	R-PTFE
5	Joint Gasket	PTFE
6	Stem	AISI 316
7	Thrust Washer	R-PTFE
8	Stem Packing	R-PTFE
9	Gland Nut	AISI 304
10	Handle	AISI 304
11	Spring Washer	AISI 304
12	Stem Nut	AISI 304
13	Plastic Cover	Plastic
14	Lock Device	AISI 304



Size	d	L	H	W	Cv Factor	Torque NM	Kgs
1/4"	11.6	48	48	100	6	4.1	0.18
3/8"	11.6	48	48	100	7	4.1	0.19
1/2"	15	58	52	100	10	4.9	0.26
3/4"	20	65.7	61	127	25	7.3	0.4
1"	25	77	65	127	35	11.4	0.59
1-1/4"	32	90	79	154	80	21.1	1.0
1-1/2"	38	98	83	154	80	21.1	1.32
2"	50	121	97	192	110	26	2.46
2-1/2"	65	145	135	244	310	48.6	4.83
3"	80	166	144	244	360	75.5	7.45
4"	100	240	159	275	820	107.8	17.1

Note

The designs, materials, dimensions and specifications shown are subject to change without notice due to our continuing program of product development.